

# Running the "Check Schedule" Feature with P6 EPPM

**ORACLE** Gold Partner

Specialized Primavera P6 Enterprise Project Portfolio Management

Users of Oracle Primavera P6, version 8.2 have the ability to run the "Check Schedule" feature with P6 EPPM to see detailed analysis of schedule information. This feature greatly reduces the time required to check basic scheduling best practice and is capable of producing a printable report for use.

To run the "Schedule Check" feature within P6 EPPM, click on Activities. Select "Actions", "Run", and select "Check Schedule".

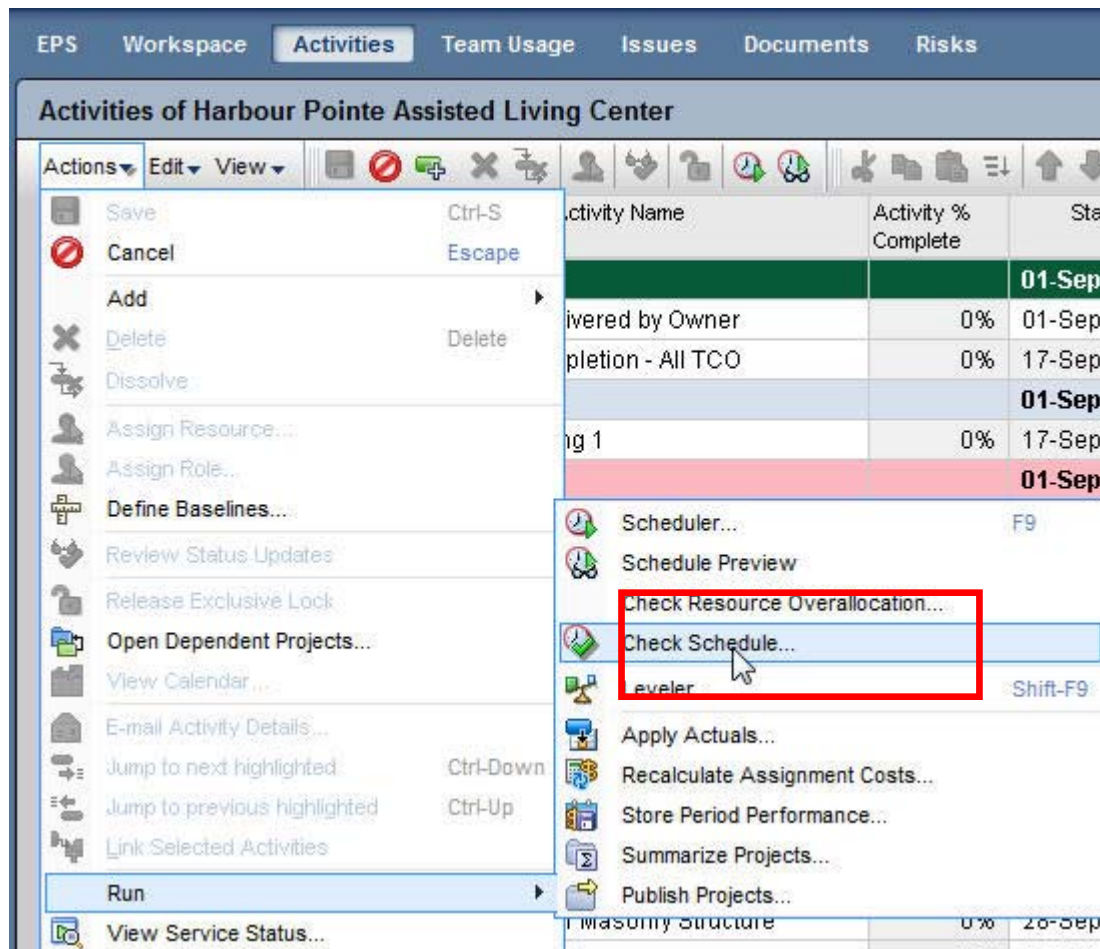


Figure 1 - Run "Check Schedule" feature

# Running the "Check Schedule" Feature with P6 EPPM

EPPM "Check Schedule" feature will allow for users to select any of 14 different metrics to check in the currently open schedule file. Target percentages can be established based on the specific requirements of the organization or project and customized information related to duration and float values can be established as well. Check boxes on the left side of the configuration window allow users to choose which items are to be included in the analysis within P6 EPPM.

Metric	Target
<input checked="" type="checkbox"/> Logic - Activities missing predecessors or successors	< 5 %
<input checked="" type="checkbox"/> Negative Lags - Relationships with a lag duration of less than 0	< 1 %
<input checked="" type="checkbox"/> Lags - Relationships with a positive lag duration	< 5 %
<input checked="" type="checkbox"/> Long Lags - Relationships with a lag duration greater than 352h	< 5 %
<input checked="" type="checkbox"/> Relationship Types - The majority of relationships should be Finish to Start	> 90 %
<input checked="" type="checkbox"/> Hard Constraints - Constraints that prevent activities being moved	< 1 %
<input checked="" type="checkbox"/> Soft Constraints - Constraints that do not prevent activities being moved	< 5 %
<input checked="" type="checkbox"/> Large Float - Activities with total float greater than 352h	< 1 %
<input checked="" type="checkbox"/> Negative Float - Activities with a total float less than 0	< 1 %
<input checked="" type="checkbox"/> Large Durations - Activities that have a remaining duration greater than 352h	< 5 %
<input checked="" type="checkbox"/> Invalid Progress Dates - Activities with invalid progress dates	< 1 %
<input checked="" type="checkbox"/> Resource / Cost - Activities that do not have an expense or a resource assigned	< 1 %
<input checked="" type="checkbox"/> Late Activities - Activities scheduled to finish later than the project baseline	< 5 %
<input checked="" type="checkbox"/> BEI - Baseline Execution Index	> 0.95

Buttons: Save, Check Schedule, Cancel

Figure 2 - Configure Metrics for Analysis



# Running the "Check Schedule" Feature with P6 EPPM



**Specialized**  
Primavera P6 Enterprise  
Project Portfolio Management

Once the metrics for the project have been established, select the option for "Check Schedule" and view the report.

▼ Projects checked					
Project ID	Project Name	Data Date	Total Activities	Complete Activities	Total Links
EC00610	Harbour Pointe Assisted Living Center	01-Jun-11	132	21	213

▶ Projects checked have links to the following Closed Projects

▼ Check Summary					
Check	Description	Target	Actual	Found	Total
Logic	Activities missing predecessors or successors	< 5%	2%	2	111
Negative Lags	Relationships with a lag duration of less than 0	< 1%	12%	24	201
Positive Lags	Relationships with a positive lag duration	< 5%	12%	25	201
Long Lags	Relationships with a lag duration greater than 352 hours	< 5%	0%	1	201
Relationship Types	The majority of relationships should be Finish to Start	> 90%	85%	171	201
Hard Constraints	Constraints that prevent activities being moved	< 1%	0%	0	111
Soft Constraints	Constraints that do not prevent activities being moved	< 5%	5%	5	111
Large Float	Activities with total float greater than 352 hours	< 1%	78%	87	111
Negative Float	Activities with a total float less than 0	< 1%	0%	0	111
Large Durations	Activities that have a remaining duration greater than 352 hours	< 5%	46%	46	99
Invalid Progress Dates (before the data date)	Incomplete activities before the data date	< 1%	0%	0	114
Invalid Progress Dates (after the data date)	Activities with actual dates after the data date	< 1%	4%	4	114
Resource / Cost	Activities that do not have an expense or a resource assigned	< 1%	1%	1	118
Late Activities	Activities scheduled to finish later than the project baseline	< 5%	6%	6	99
BEI	Baseline Execution Index	> 0.95	0.95	-	-

Figure 3 - Sample Summary "Check Schedule" report

# Running the "Check Schedule" Feature with P6 EPPM



**Specialized**  
Primavera P6 Enterprise  
Project Portfolio Management

The summary report will display high level information based on the percentages and durations specified when configuring the Check Schedule feature. Column information will display the target percentage, actual percentage as found in the current schedule, total number of activities found that match the criteria description along with total activities.

Logic - Activities missing predecessors or successors			
Project ID	Activity ID	Activity Description	State
EC00610	EC1610	Curbs & Paving	No Successor
EC00610	EC2450	New Task Added by BC	No Successor

Negative Lags - Relationships with a lag duration of less than 0

Lags - Relationships with a positive lag duration

Long Lags - Relationships with a lag duration greater than 352 hours							
Predecessor Project ID	Predecessor Activity ID	Predecessor Activity Description	Relationship Type	Lag Duration (hours)	Successor Project ID	Successor Activity ID	Successor Activity Description
EC00610	EC1000	Curbing	Finish to Start	560	EC00610	EC1600	Site Cleanup

Relationship Types - The majority of relationships should be Finish to Start		
Relationship Type	Count	%
Finish to Finish	7	3%
Finish to Start	171	85%
Start to Finish	1	0%
Start to Start	22	11%

Predecessor Project ID	Predecessor Activity ID	Predecessor Activity Description	Relationship Type	Lag Duration (hours)	Successor Project ID	Successor Activity ID	Successor Activity Description
EC00610	EC1000	Curbing	Start to Start	320	EC00610	EC1600	Site Cleanup
EC00610	EC1150	Building Slab Incl. UG Utils	Start to Finish	0	EC00610	EC2020	Roof Complete
EC00610	EC1350	Roof Slab/Collar Beam	Start to Start	0	EC00610	EC1360	Mobilize Scaffolding

Listed below the Summary section of the report are the detailed listing of activities which establish the information contained within the Summary portion of the report.